

# NSE Antibody

Catalog No: #21487



Package Size: #21487-1 50ul #21487-2 100ul #21487-4 25ul

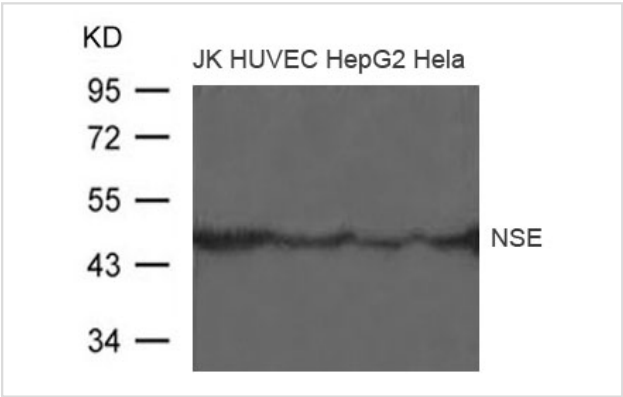
## Overview

Product Name	NSE Antibody
Host Species	Rabbit
Clonality	Polyclonal
Applications	WB
Species Reactivity	Hu Ms
Immunogen Type	Peptide-KLH
Target Name	NSE
Alternative Names	ENO2

## Application Details

Predicted MW: 47kd
Western blotting: 1:500~1:1000

## Images



Western blot analysis of extract from JK, HUVEC, HepG2 and Hela cells using NSE Antibody #21487

## Descriptions

Immunogen	Peptide sequence around aa.6~10(I-W-A-R-E)derived from Human NSE.
Specificity	The antibody detects endogenous level of total NSE protein.
Purification	Antibodies were produced by immunizing rabbits with synthetic peptide and KLH conjugates. Antibodies were purified by affinity-chromatography using epitope-specific peptide.
Formulation	Supplied at 1.0mg/mL in phosphate buffered saline (without Mg2+ and Ca2+), pH 7.4, 150mM NaCl, 0.02% sodium azide and 50% glycerol.
Storage	Store at -20°C for long term preservation (recommended). Store at 4°C for short term use.
Accession NO.	Swiss-Prot: P09104NCBI Protein: NP_001966.1

## Related Information

---

Has neurotrophic and neuroprotective properties on a broad spectrum of central nervous system (CNS) neurons. Binds, in a calcium-dependent manner, to cultured neocortical neurons and promotes cell survival.

McAleese S.M., Dunbar B., Fothergill J., Hinks L., Day I.N.M.Eur. J. Biochem. 178:413-417(1988)

---

Note: This product is for in vitro research use only and is not intended for use in humans or animals.