

# ESA(FLOT2) Antibody

Catalog No: #21603



Package Size: #21603-1 50ul #21603-2 100ul #21603-4 25ul

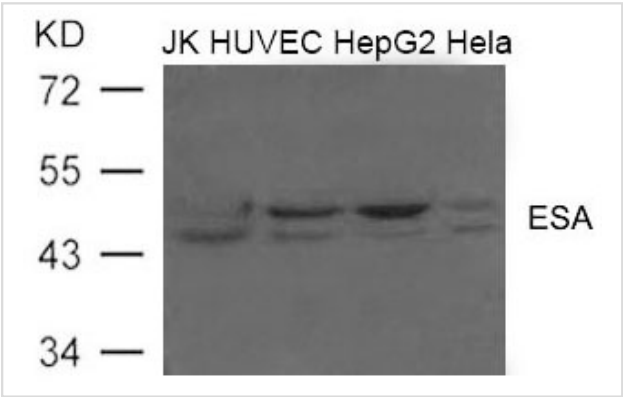
## Overview

Product Name	ESA(FLOT2) Antibody
Host Species	Rabbit
Clonality	Polyclonal
Applications	WB
Species Reactivity	Hu
Immunogen Type	Peptide-KLH
Target Name	ESA(FLOT2)
Alternative Names	ECS1; ESA1; ECS-1; M17S1;

## Application Details

Predicted MW: 47kd
Western blotting: 1:500~1:1000

## Images



Western blot analysis of extract from JK, HUVEC, HepG2 and Hela cells using ESA(FLOT2) Antibody #21603

## Descriptions

Immunogen	Peptide sequence around aa.420~424(I-K-K-A-T) derived from Human ESA (FLOT2).
Specificity	The antibody detects endogenous level of total ESA (FLOT2) protein.
Purification	Antibodies were produced by immunizing rabbits with synthetic peptide and KLH conjugates. Antibodies were purified by affinity-chromatography using epitope-specific peptide.
Formulation	Supplied at 1.0mg/mL in phosphate buffered saline (without Mg2+ and Ca2+), pH 7.4, 150mM NaCl, 0.02% sodium azide and 50% glycerol.
Storage	Store at -20°C for long term preservation (recommended). Store at 4°C for short term use.
Accession NO.	Swiss-Prot: Q14254NCBI Protein: NP_004466.2

## Related Information

---

May act as a scaffolding protein within caveolar membranes, functionally participating in formation of caveolae or caveolae-like vesicles. May be involved in epidermal cell adhesion and epidermal structure and function.

Gorbea C., Pratt G., Ustrell V., Bell R., Sahasrabudhe S., Hughes R.E., Rechsteiner M. J. Biol. Chem. 285:31616-31633(2010)

---

Note: This product is for in vitro research use only and is not intended for use in humans or animals.