

Id2 Antibody

Catalog No: #21620



Package Size: #21620-1 50ul #21620-2 100ul #21620-4 25ul

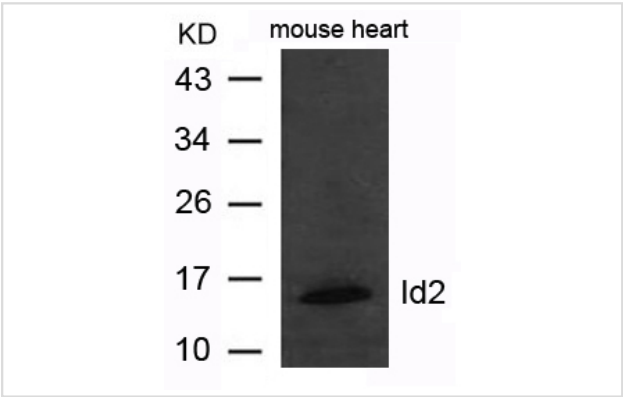
Overview

Product Name	Id2 Antibody
Host Species	Rabbit
Clonality	Polyclonal
Applications	WB
Species Reactivity	Hu Ms Rt
Immunogen Type	Peptide-KLH
Target Name	Id2
Alternative Names	GIG8; ID2A; ID2H

Application Details

Predicted MW: 15kd
Western blotting: 1:500~1:1000

Images



Western blot analysis of extract from mouse heart tissue using Id2 Antibody #21620

Descriptions

Immunogen	Peptide sequence around aa.5~9(S-P-V-R-S) derived from Human Id2.
Specificity	The antibody detects endogenous level of total Id2 protein.
Purification	Antibodies were produced by immunizing rabbits with synthetic peptide and KLH conjugates. Antibodies were purified by affinity-chromatography using epitope-specific peptide.
Formulation	Supplied at 1.0mg/mL in phosphate buffered saline (without Mg2+ and Ca2+), pH 7.4, 150mM NaCl, 0.02% sodium azide and 50% glycerol.
Storage	Store at -20°C for long term preservation (recommended). Store at 4°C for short term use.
Accession NO.	Swiss-Prot: Q02363NCBI Protein: NP_002157.2

Related Information

ID (inhibitor of DNA binding) HLH proteins lack a basic DNA-binding domain but are able to form heterodimers with other HLH proteins, thereby inhibiting DNA binding. ID-2 may be an inhibitor of tissue-specific gene expression.

The MGC Project TeamGenome Res. 14:2121-2127(2004)

Note: This product is for in vitro research use only and is not intended for use in humans or animals.