

p53(Phospho-Ser315) Antibody

Catalog No: #11100



Package Size: #11100-1 50ul #11100-2 100ul #11100-4 25ul

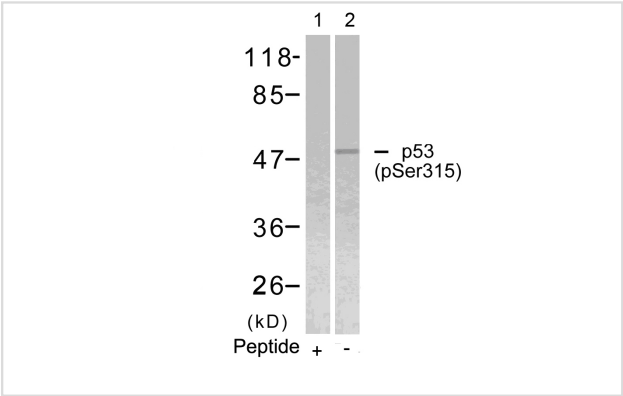
Overview

Product Name	p53(Phospho-Ser315) Antibody
Host Species	Rabbit
Clonality	Polyclonal
Applications	WB IHC IF
Species Reactivity	Hu
Immunogen Type	Peptide-KLH
Target Name	p53
Modification	Phospho-Ser315
Alternative Names	Tumor suppressor p53; Phosphoprotein p53; Antigen NY-CO-13; TP53;

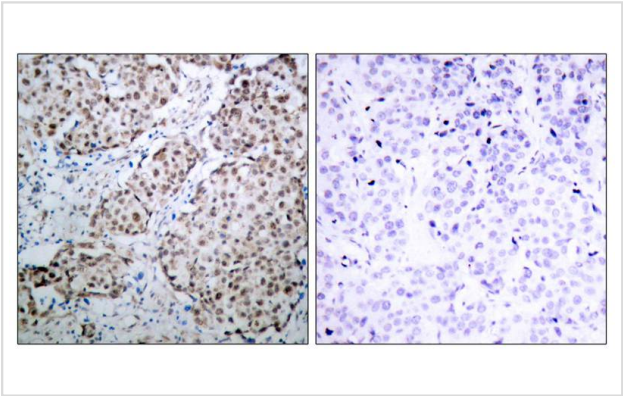
Application Details

Predicted MW: 53kd
Western blotting: 1:500~1:1000
Immunohistochemistry: 1:50~1:100
Immunofluorescence: 1:100~1:200

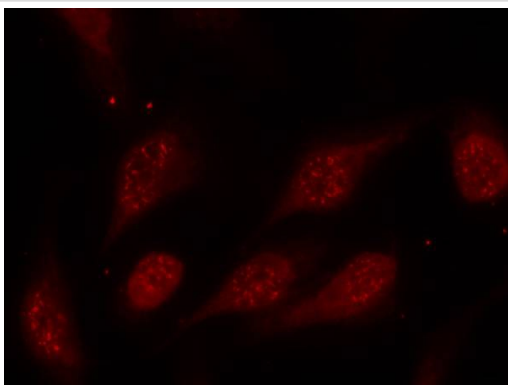
Images



Western blot analysis of extracts from Hela cells using p53(Phospho-Ser315) Antibody #11100(Lane 2) and the same antibody preincubated with blocking peptide(Lane1).



Immunohistochemical analysis of paraffin-embedded human breast carcinoma tissue using p53(Phospho-Ser315) Antibody #11100(left) or the same antibody preincubated with blocking peptide(right).



Immunofluorescence staining of methanol-fixed HeLa cells using p53(Phospho-Ser315) Antibody #11100.

Descriptions

Immunogen	Peptide sequence around phosphorylation site of serine 315 (S-S-S(p)-P-Q) derived from Human p53.
Specificity	The antibody detects endogenous level of p53 only when phosphorylated at serine 315.
Purification	Antibodies were produced by immunizing rabbits with synthetic phosphopeptide and KLH conjugates. Antibodies were purified by affinity-chromatography using epitope-specific phosphopeptide. Non-phospho specific antibodies were removed by chromatography using non-phosphopeptide.
Formulation	Supplied at 1.0mg/mL in phosphate buffered saline (without Mg ²⁺ and Ca ²⁺), pH 7.4, 150mM NaCl, 0.02% sodium azide and 50% glycerol.
Storage	Store at -20°C for long term preservation (recommended). Store at 4°C for short term use.
Accession NO.	Swiss-Prot: P04637NCBI Protein: NP_000537.3

Related Information

Acts as a tumor suppressor in many tumor types; induces growth arrest or apoptosis depending on the physiological circumstances and cell type. Involved in cell cycle regulation as a trans-activator that acts to negatively regulate cell division by controlling a set of genes required for this process. One of the activated genes is an inhibitor of cyclin-dependent kinases. Apoptosis induction seems to be mediated either by stimulation of BAX and FAS antigen expression, or by repression of Bcl-2 expression. Implicated in Notch signaling cross-over.

Lu, H. et al. (1997) Mol. Cell. Biol. 17, 5923-5934.

Lohrum, M. et.al. (1996) Oncogene 13, 2527-2539.

Posp

Note: This product is for in vitro research use only and is not intended for use in humans or animals.